

LOC/DME I-VCT 111.5 Chan 52	APP CRS 126°	Rwy Idg 9111 TDZE 115 Apt Elev 115
---	------------------------	---

ILS or LOC/DME RWY 12L

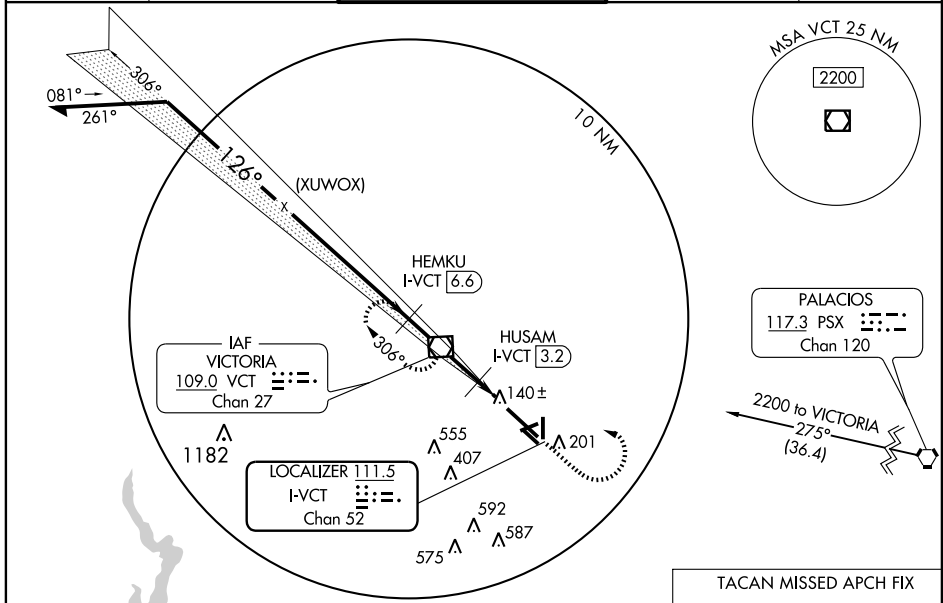
VICTORIA RGNL (VCT)

NA For inoperative MALS, increase S-ILS 12L Cat E visibility to ¾ mile and S-LOC 12L Cat D and E visibility to 1 mile.

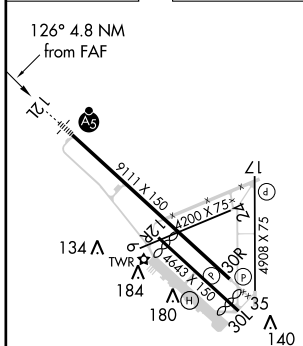


MISSED APPROACH: Climb to 2100 then left turn direct VCT VOR/DME and hold. (TACAN aircraft climb to 2100 then left turn on heading 120° and PSX VORTAC R-260 to GUDNY/ 1.4 DME and hold W, RT, 080° inbound.)

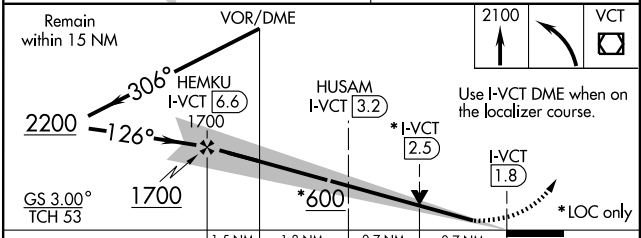
ATIS 119.025	HOUSTON CENTER 135.05 353.6	VICTORIA TOWER * 126.075 (CTAF) 257.95	GND CON 120.525 239.25	UNICOM 122.7
------------------------	---------------------------------------	---	----------------------------------	------------------------



ELEV 115	D	TDZE 115
----------	----------	----------



MIRL Rwy 17-35
REIL Rwy 17 and 35
HIRL Rwy 12L-30R



CATEGORY	A	B	C	D	E
S-ILS 12L	315-½ 200 (200-½)				
S-LOC 12L	400-½ 285 (300-½)		400-¾ 285 (300-¾)		
CIRCLING	520-1 405 (500-1)	580-1 465 (500-1)	580-1½ 465 (500-1½)	680-2 565 (600-2)	NA

SC-5, 07 APR 2011 to 05 MAY 2011

SC-5, 07 APR 2011 to 05 MAY 2011