

RNAV (GPS) RWY 12L

VICTORIA RGNL (VCT)

WAAS CH 82709 W12A	APP CRS 126°	Rwy Idg 9111 TDZE 115 Apt Elev 115
--	------------------------	---

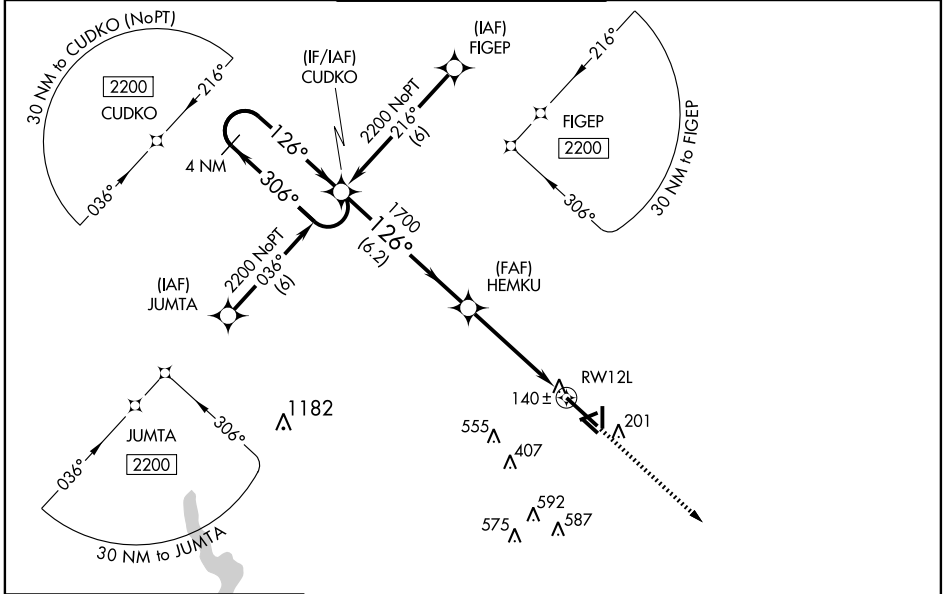
▼ Baro-VNAV NA when using Port Lavaca altimeter setting. For uncompensated Baro-VNAV systems, LNAV/VNAV NA below -15°C (5°F) or above 48°C (118°F). DME/DME RNP-0.3 NA. For inoperative MALS, increase LPV Cat E and LNAV/VNAV Cat D and E visibility ½ mile and LNAV Cat E visibility ½ mile. VDP NA when using Port Lavaca altimeter setting. For inoperative MALS when using Port Lavaca altimeter setting, increase LPV all Cats visibility ½ mile, LNAV/VNAV and LNAV Cat E visibility ½ mile. When local altimeter setting not received, use Port Lavaca altimeter setting and increase all DA 52 feet and all MDA 60 feet, increase LNAV/VNAV Cat A, B, and C and LNAV Cat C, D, and E visibility ¼ mile.

MALS



MISSED APPROACH: Climb to 2200 direct SEYOG and hold.

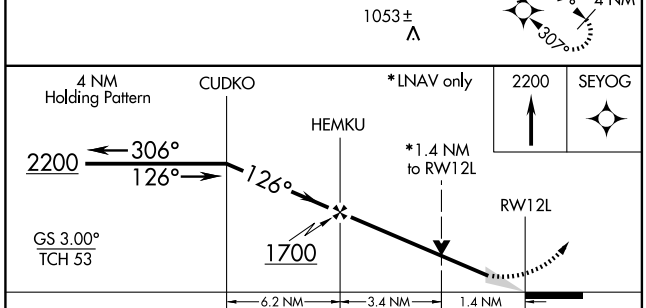
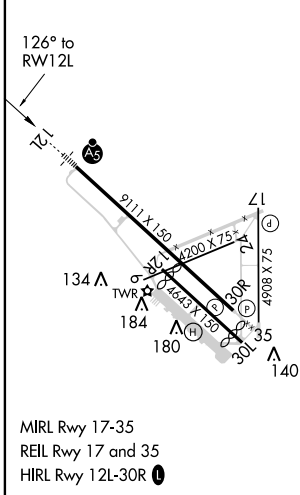
ATIS 119.025	HOUSTON CENTER 135.05 353.6	VICTORIA TOWER * 126.075 (CTAF) 257.95	GND CON 120.525 239.25	UNICOM 122.7
------------------------	---------------------------------------	---	----------------------------------	------------------------



SC-5, 07 APR 2011 to 05 MAY 2011

SC-5, 07 APR 2011 to 05 MAY 2011

ELEV 115	D	TDZE 115
----------	----------	----------



CATEGORY	A	B	C	D	E
LPV DA		365-½		250 (300-½)	
LNAV/VNAV DA	395-½		280 (300-½)	395-¾ 280 (300-¾)	
LNAV MDA	600-½	485 (500-½)	600-¾ 485 (500-¾)	600-1 485 (500-1)	600-1¼ 485 (500-1¼)
CIRCLING	600-1	485 (500-1)	600-1½ 485 (500-1½)	680-2 565 (600-2)	NA