

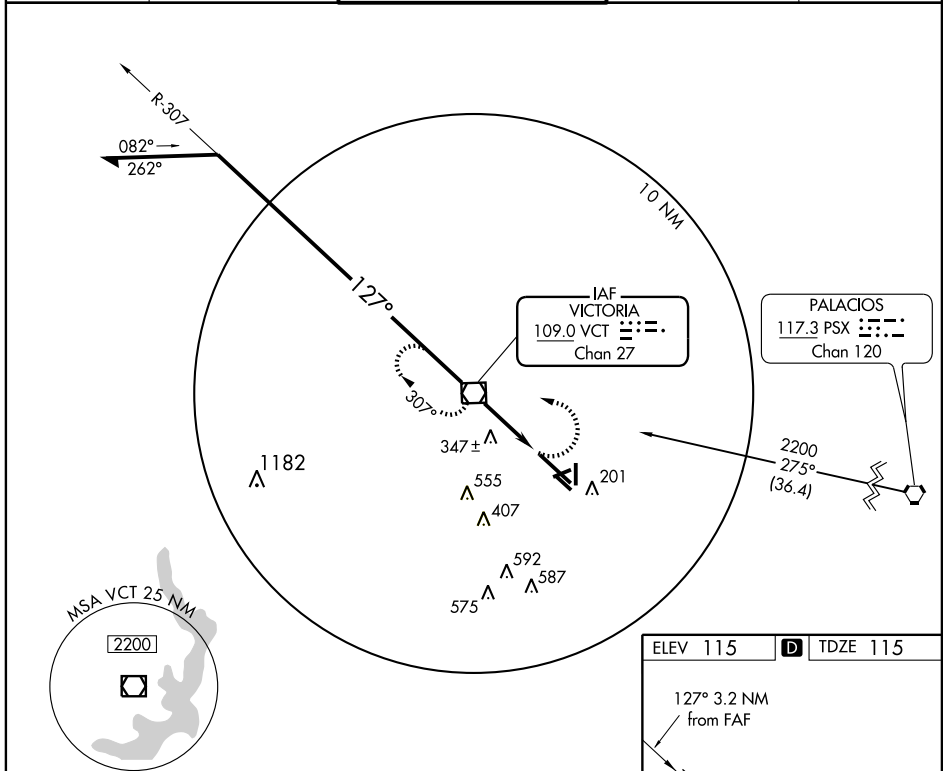
VOR/DME VCT 109.0 Chan 27	APP CRS 127°	Rwy Idg 9111 TDZE 115 Apt Elev 115
---	------------------------	---

VOR RWY 12L

VICTORIA RGNL (VCT)

<p>⚠ For inoperative MALSR, increase S-12L Cat E visibility to 1¾ miles. VDP NA when using Port Lavaca altimeter setting. For inoperative MALSR when using Port Lavaca altimeter setting, increase S-12L Cat E visibility to 2 miles. When local altimeter setting not received, use Port Lavaca altimeter setting and increase all MDA 60 feet, increase S-12L Cat C, D, and E visibility ¼ mile.</p>	<p>MALSR </p>	<p>MISSED APPROACH: Climbing left turn to 2200 direct VCT VOR/DME and hold, continue climb-in-hold to 2200.</p>
---	-------------------	---

ATIS 119,025	HOUSTON CENTER 135.05 353.6	VICTORIA TOWER * 126,075 (CTAF) 257.95	GND CON 120,525 239,25	UNICOM 122.7
------------------------	---------------------------------------	--	----------------------------------	------------------------



SC-5, 07 APR 2011 to 05 MAY 2011

SC-5, 07 APR 2011 to 05 MAY 2011

Remain within 15 NM		VOR/DME		2200	VCT
<p>2200</p> <p>307°</p> <p>127°</p> <p>1300</p>		<p>VCT [2]</p> <p>3.31 TCH 53</p> <p>VCT [3.2]</p>		<p>2200</p> <p></p>	<p></p>
		← 2 NM → 1.2 NM →			
CATEGORY	A	B	C	D	E
S-12L	600-½	485 (500-½)	600-¾ 485 (500-¾)	600-1 485 (500-1)	600-1¼ 485 (500-1¼)
CIRCLING	600-1	485 (500-1)	600-1½ 485 (500-1½)	680-2 565 (600-2)	NA

ELEV 115	D	TDZE 115
----------	---	----------

MIRL Rwy 17-35
REIL Rwy 17 and 35
HIRL Rwy 12L-30R

FAF to MAP 3.2 NM					
Knots	60	90	120	150	180
Min:Sec	3:12	2:08	1:36	1:17	1:04